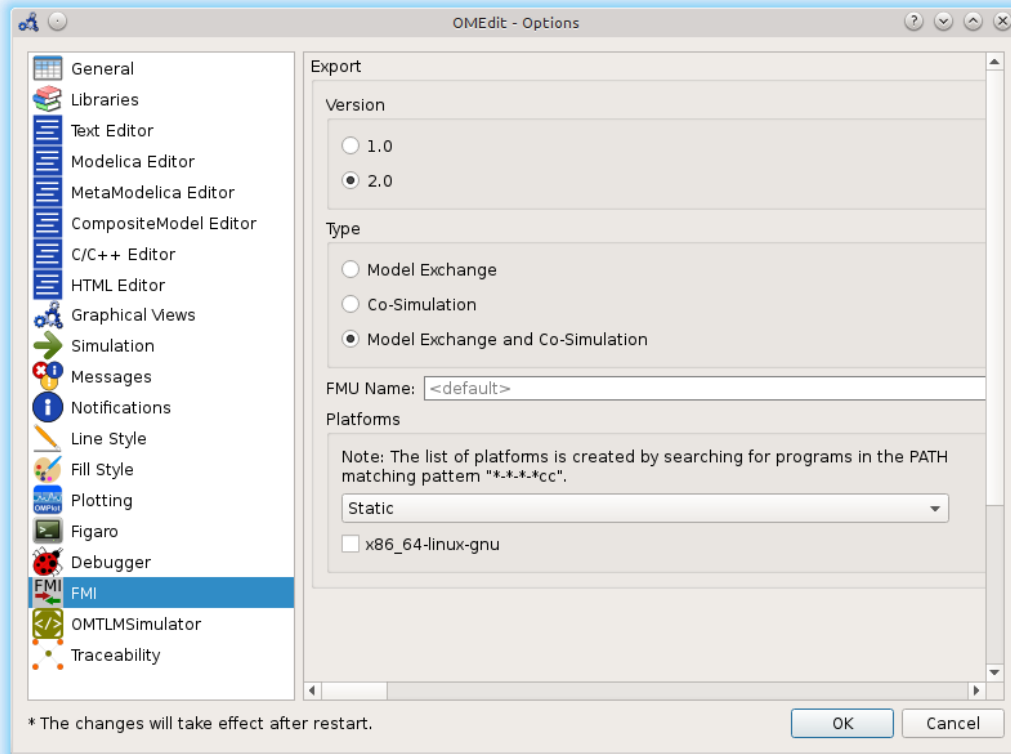


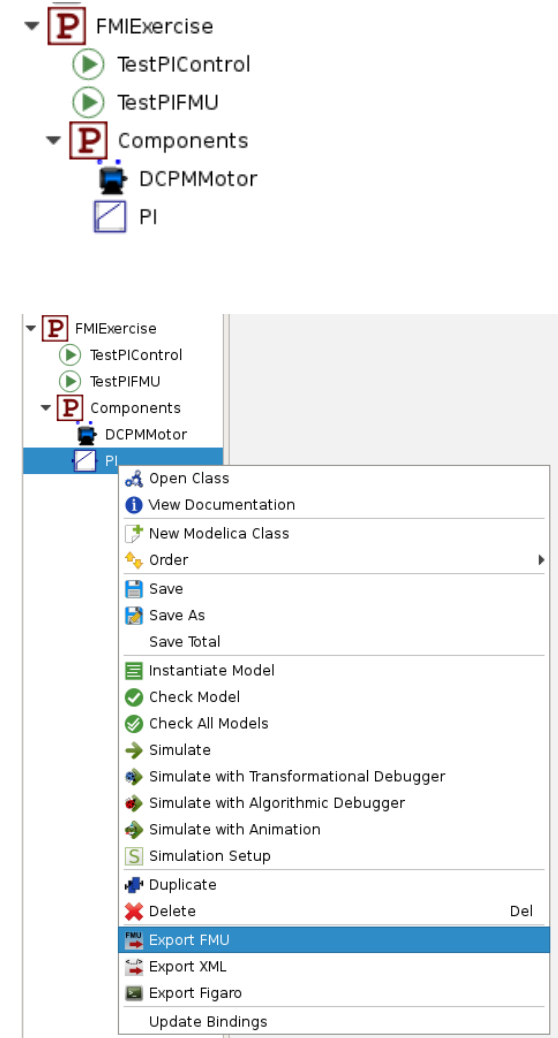
Exercise: FMU export and import (1)

- Open OMEdit and check FMI settings in Tools->Options



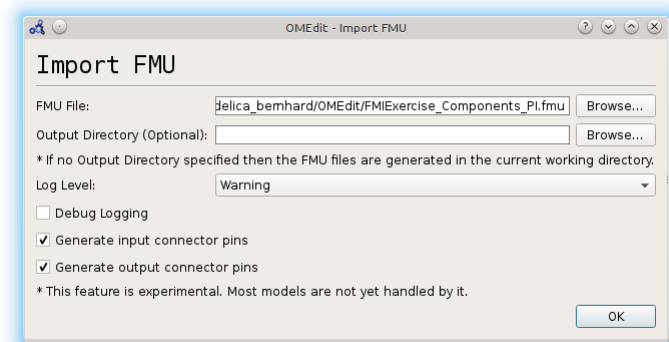
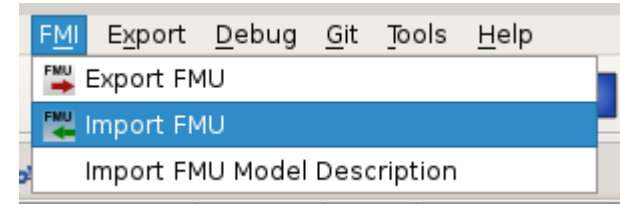
Exercise 1.4: FMU export and import (2)

- Find the FMIEExercise.mo file in the tutorial folder and open it in OMEdit
- Goal:** (1) Export the PI block as FMU, (2) import the exported FMU, (3) compare simulation results of imported PI FMU block vs. native use of the PI block
- Export PI block by using right-click context menu as indicated at the right
- The message browser shows where the FMU was generated on your system



Exercise 1.4: FMU export and import (3)

- Import FMU by selecting FMI->Import FMU from the menu
- Find and select the FMU in the directory where it was exported before as indicated at the right
- The FMU should now appear in the package browser



Exercise 1.4: FMU export and import (4)

- The imported FMU is wrapped inside a standard Modelica model and can be inserted by drag and drop into an existing model
- The model TestPIFMU has been prepared so that the results of the imported FMU can be easily compared to the native block. Simulate it and compare results.

