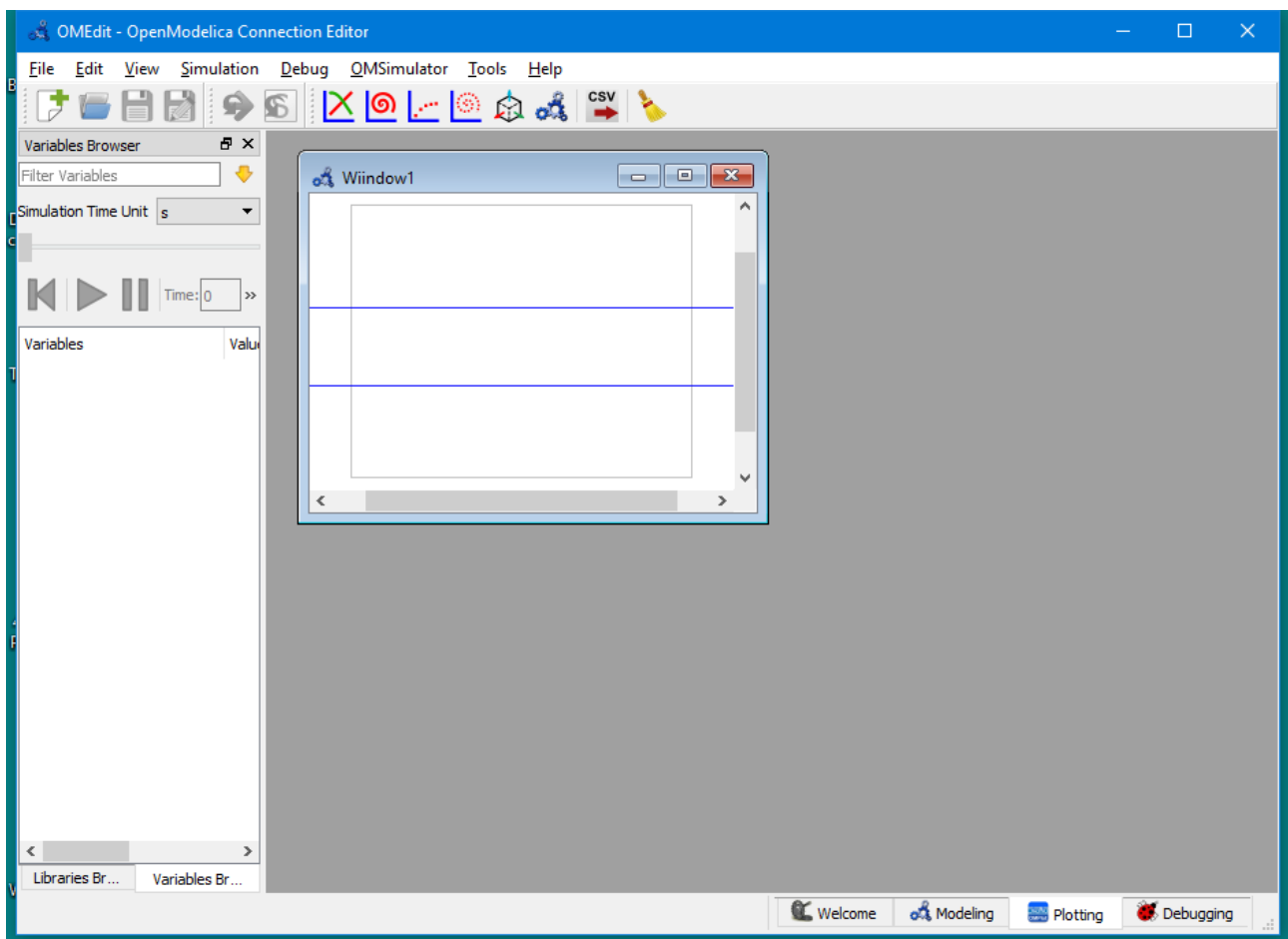
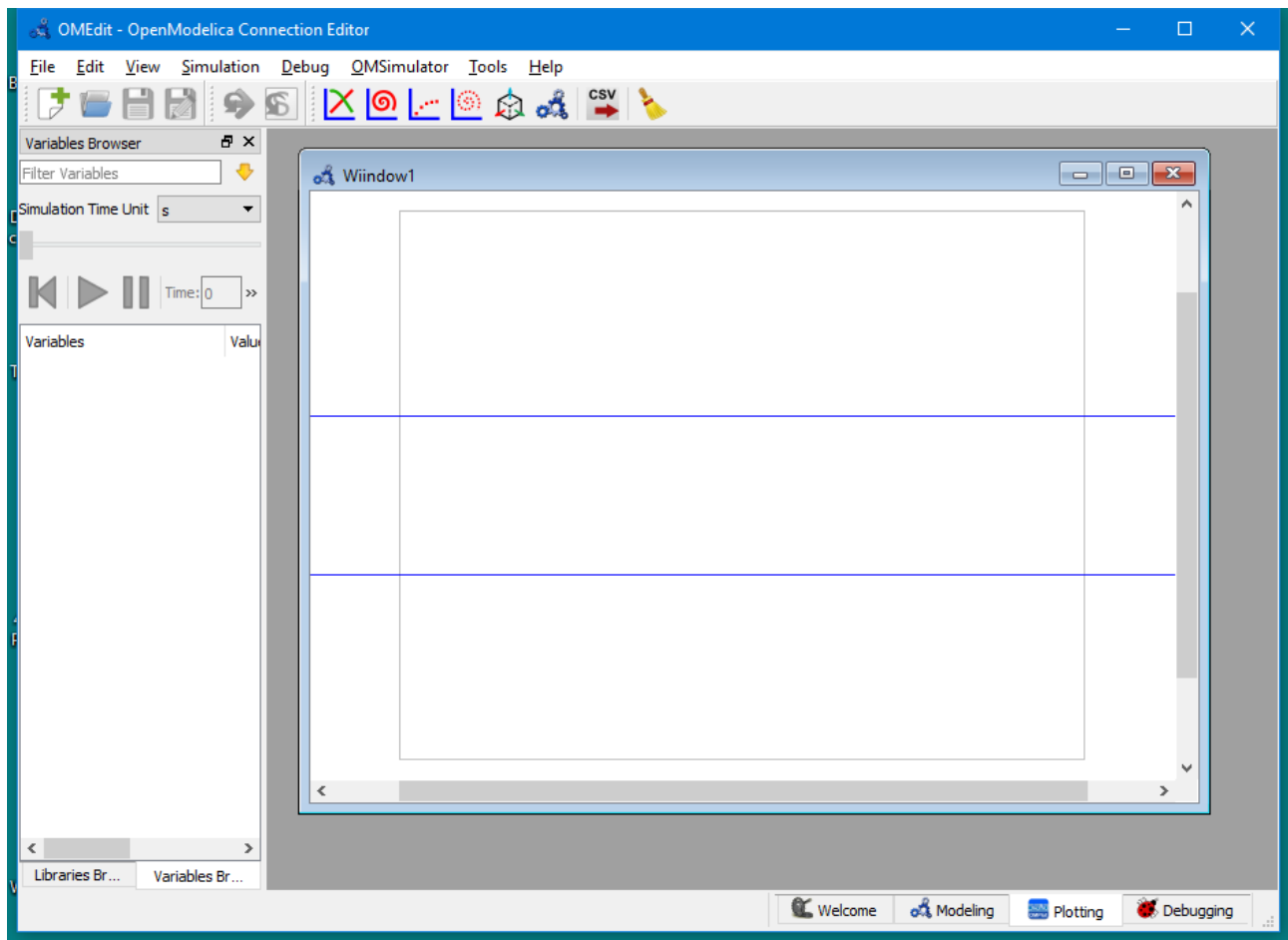


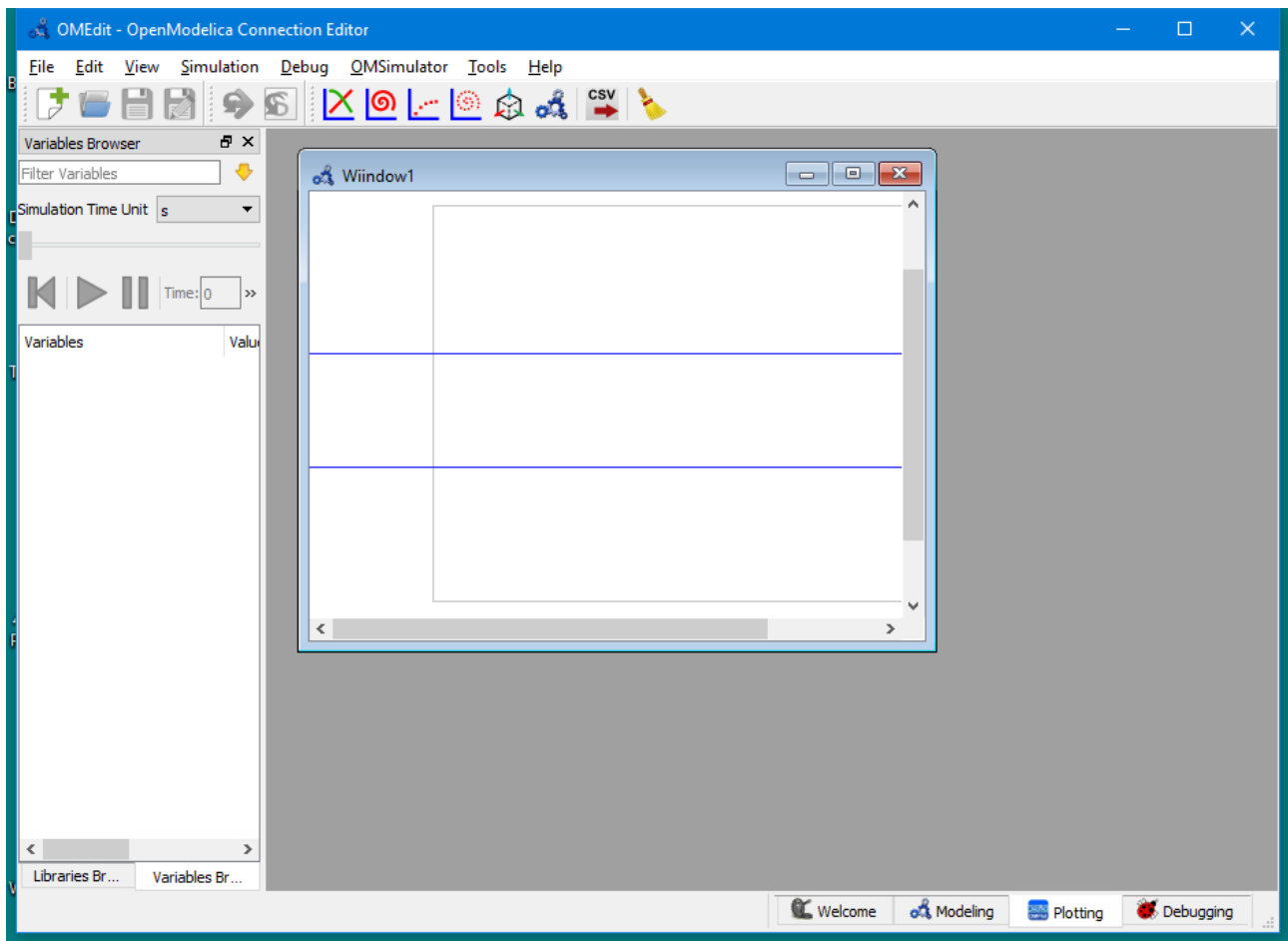
Window 1



Starting view

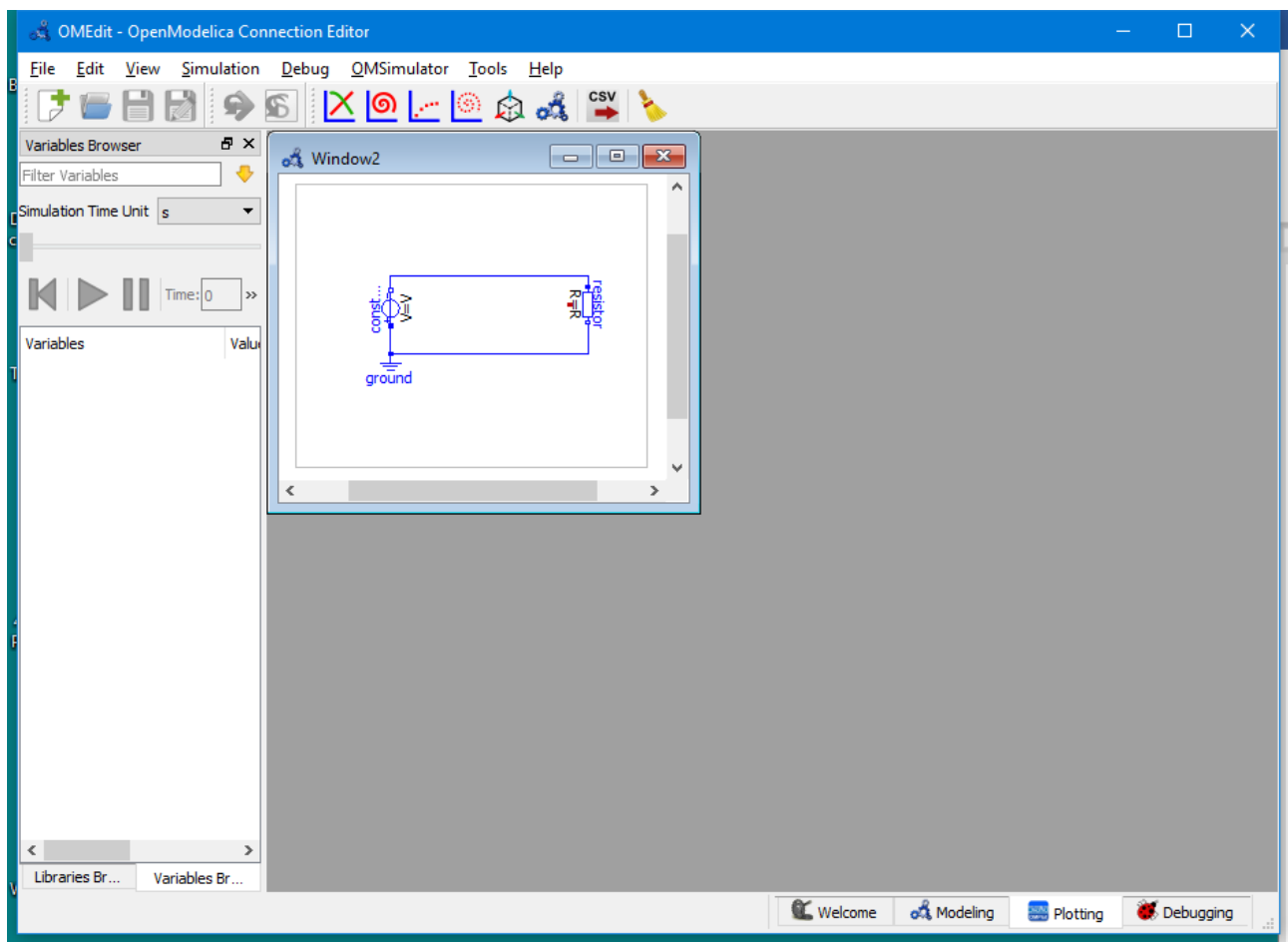


Enlarged view

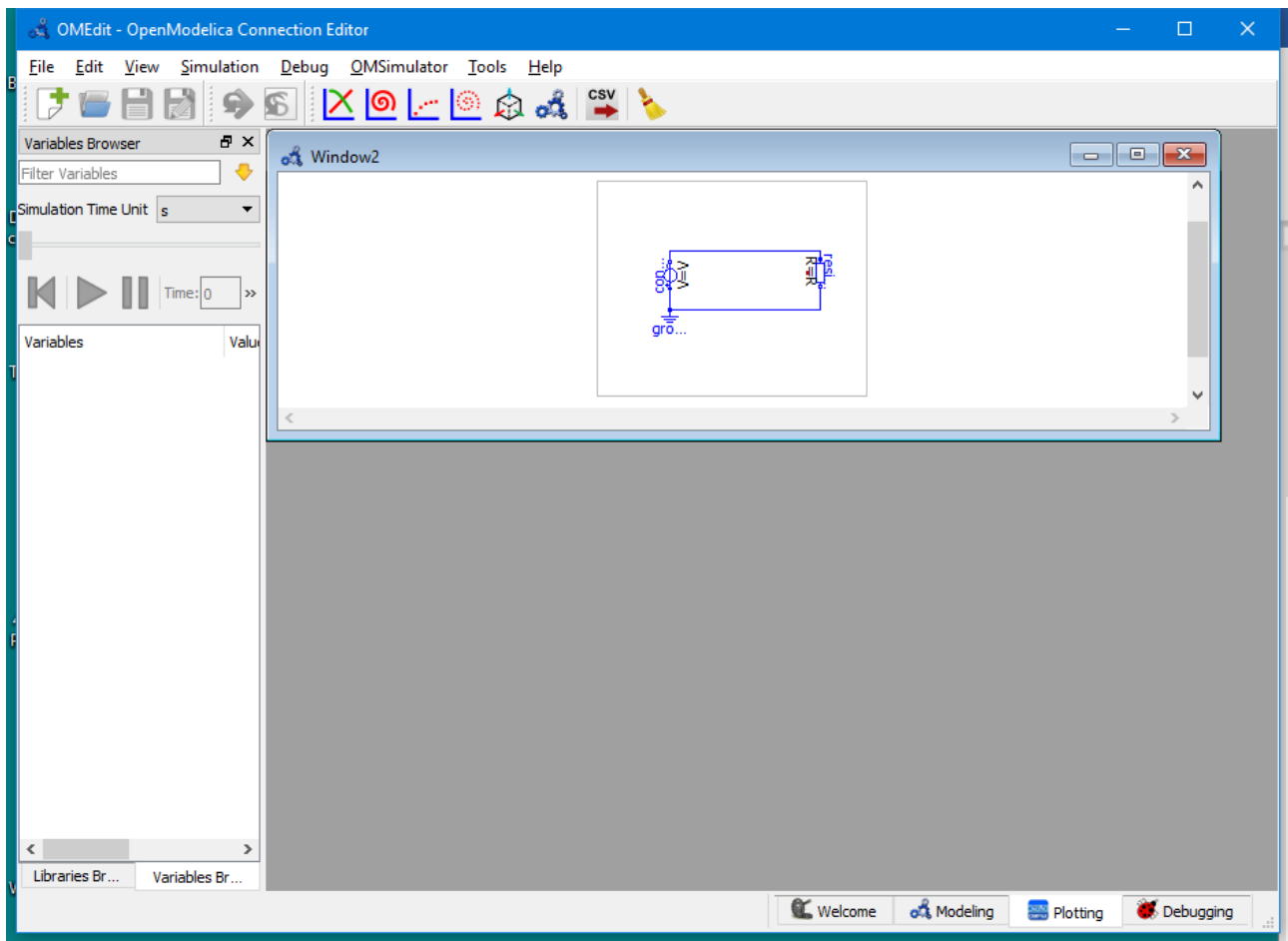


Trying to see the left part through horizontal scrollbar

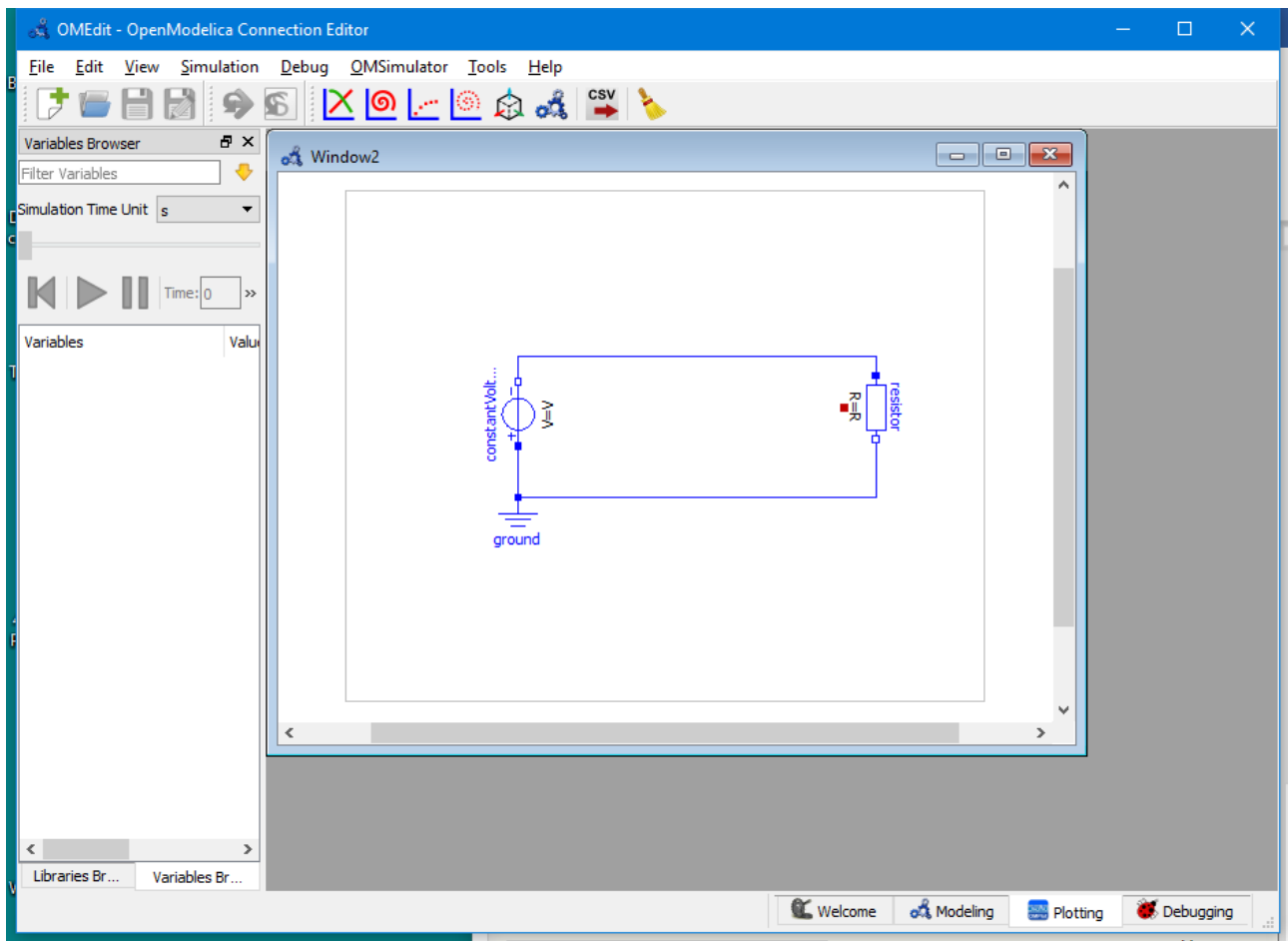
Window 2



Starting view



Impossible to exploit effectively the space (large blank parts outside the diagram)



Windows showing that the bounding diagram has a different aspect ratio than the diagram's, which is larger. Moreover the above bounding rectangle contains also too large margins horizontally

